

# Southern Chinook Conservation Units

## CU: East Vancouver Island-Cowichan & Koksilah

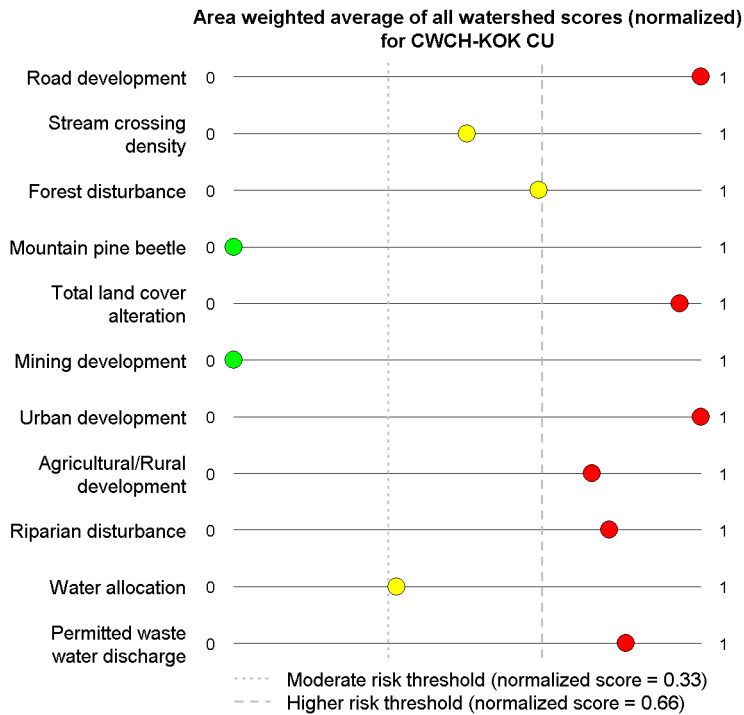


Fisheries and Oceans  
Canada

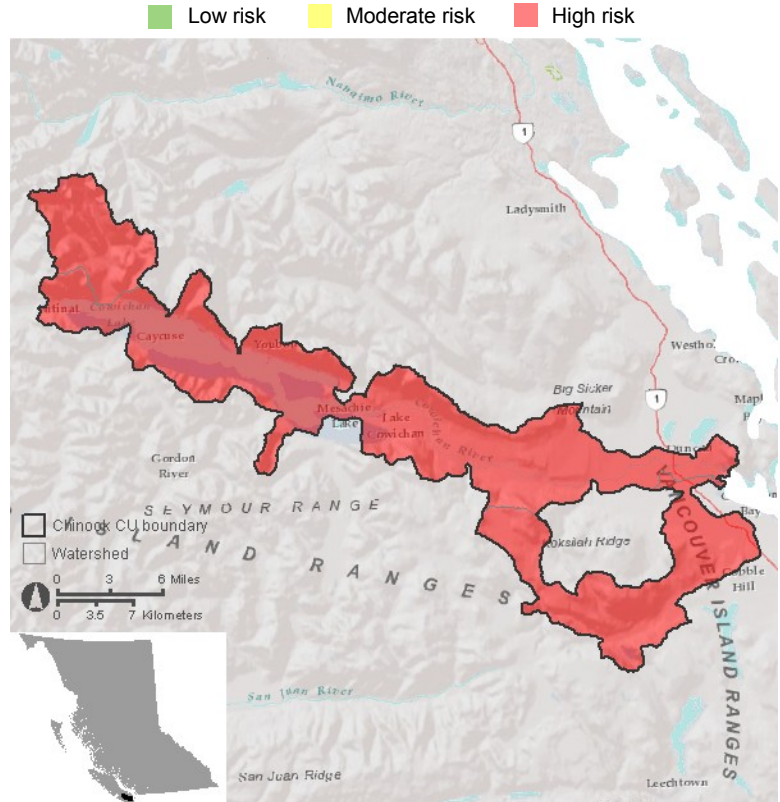
Pêches et Océans  
Canada



### CU Overview



### Cumulative Watershed Risk Score (roll up of 5 selected indicators)



### Habitat Quantity

CU spawning length	6 km	(0.2% of total for all CUs)
CU accessible stream length	766 km	
Estuary area	393 ha	(13.8% under threat)

### Vulnerability

Life history type

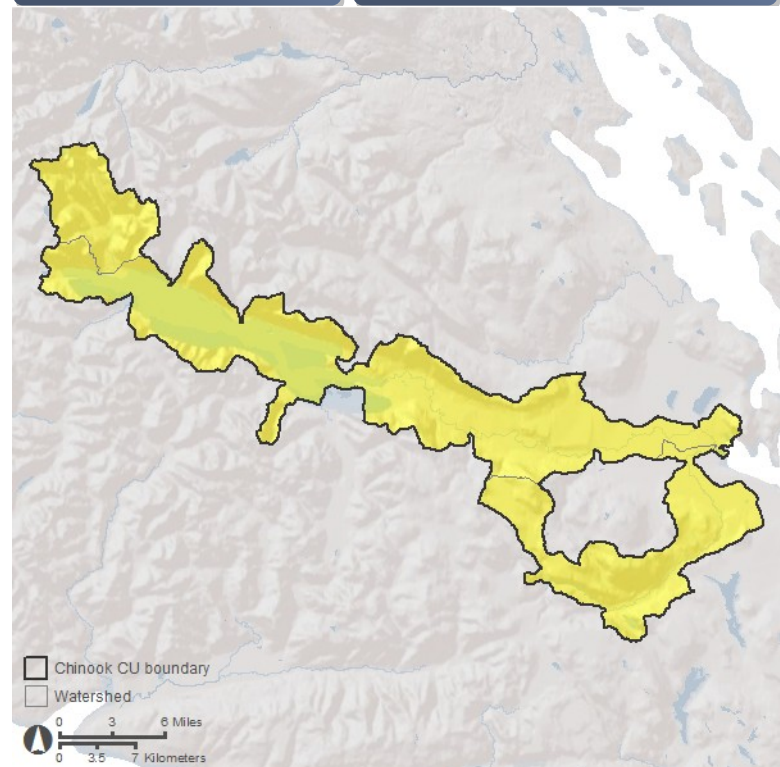
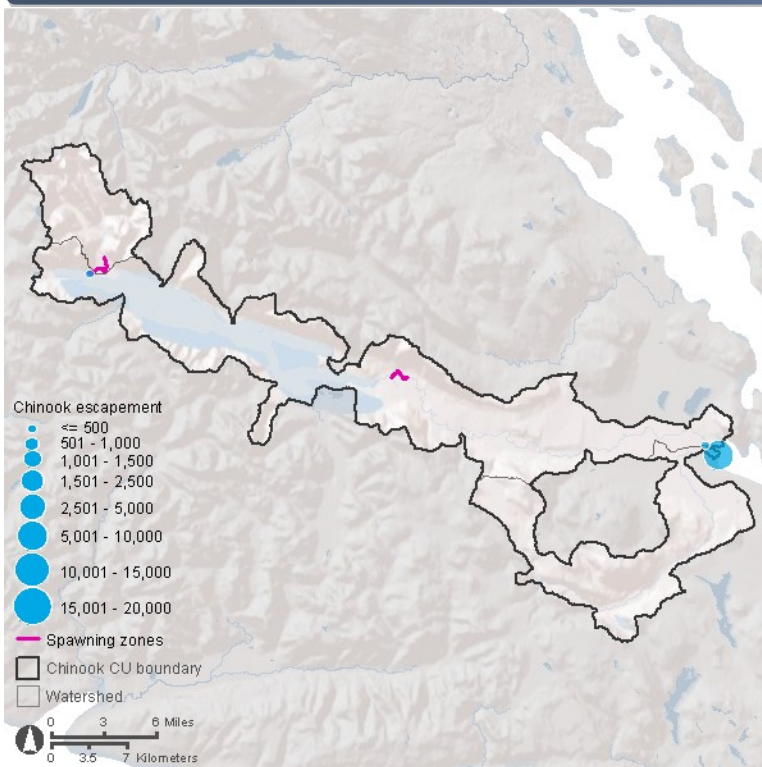
Ocean

Large lake influence?

Yes

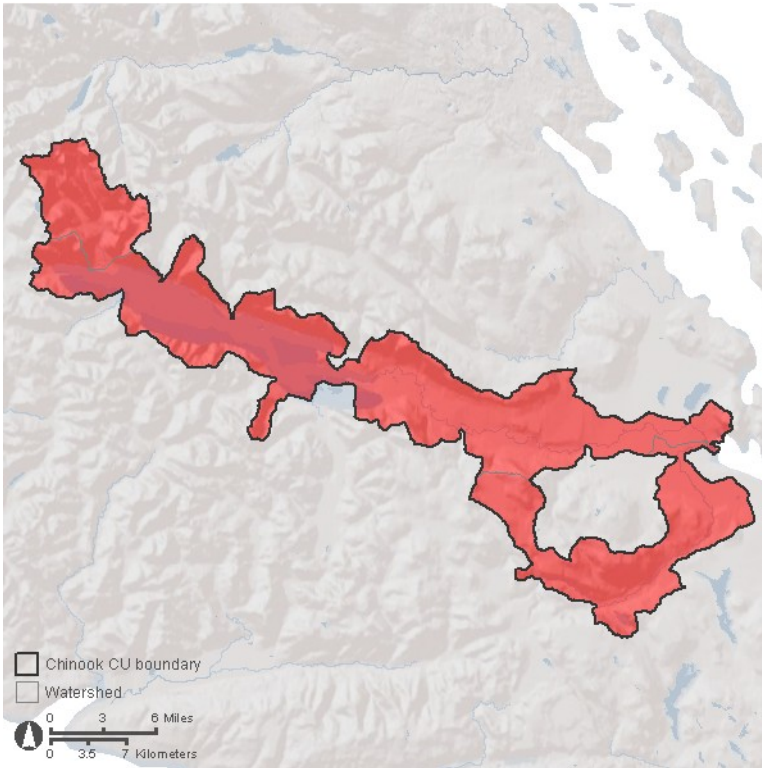
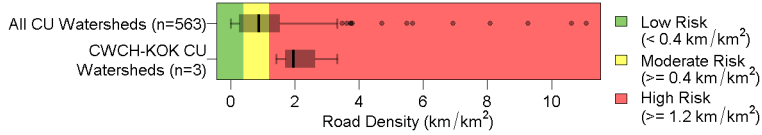
Flow sensitivity

- Summer & winter (high risk)
- Summer / Winter (moderate risk)
- No sensitivity (low risk)



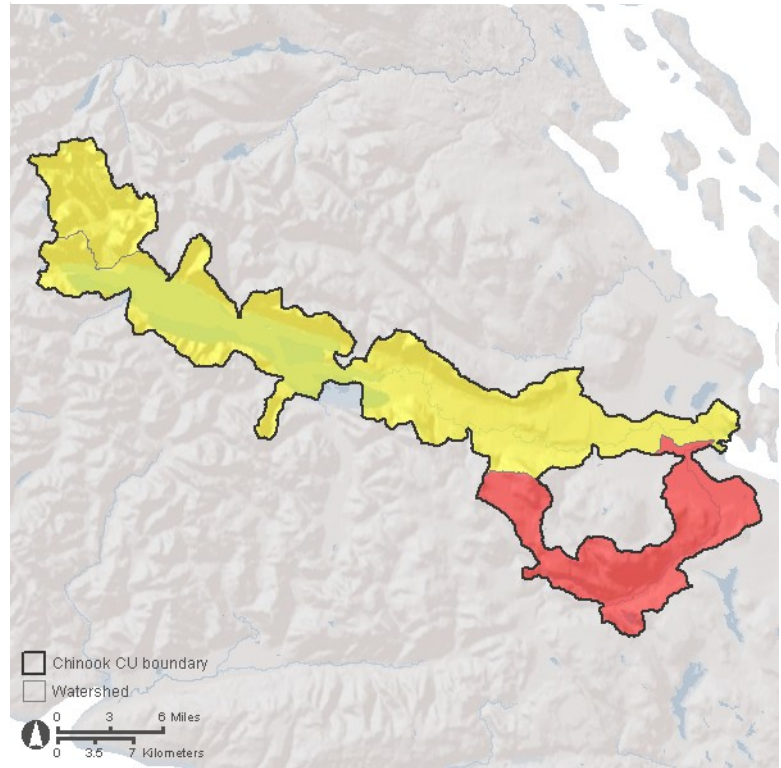
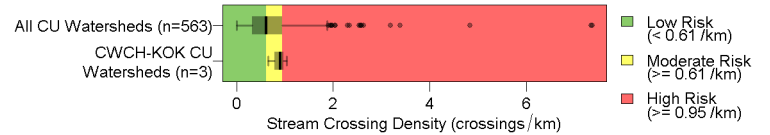
Pressure

Road Development



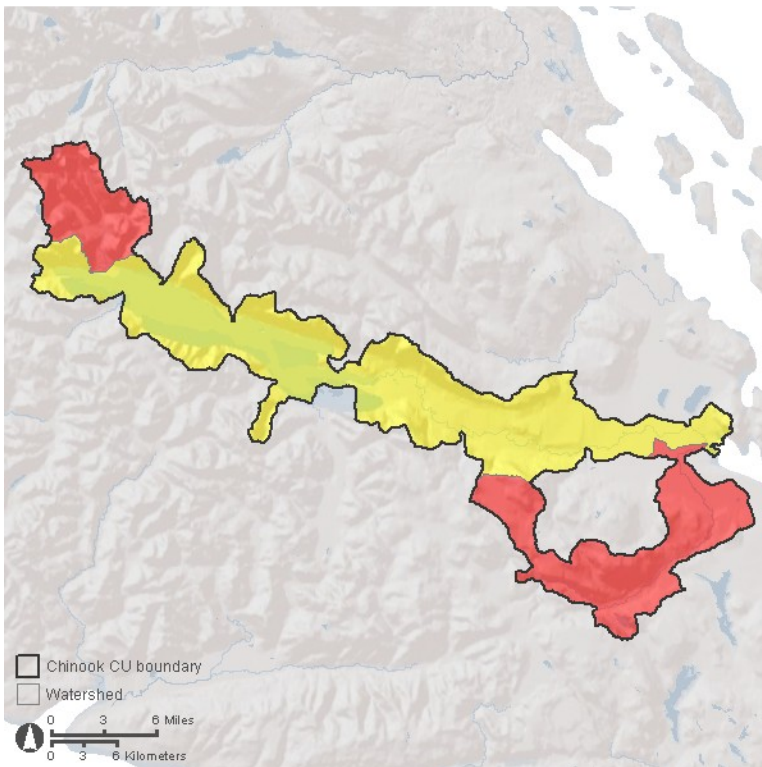
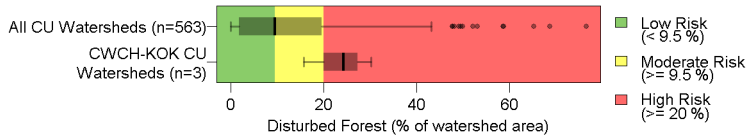
Pressure

Stream Crossing Density



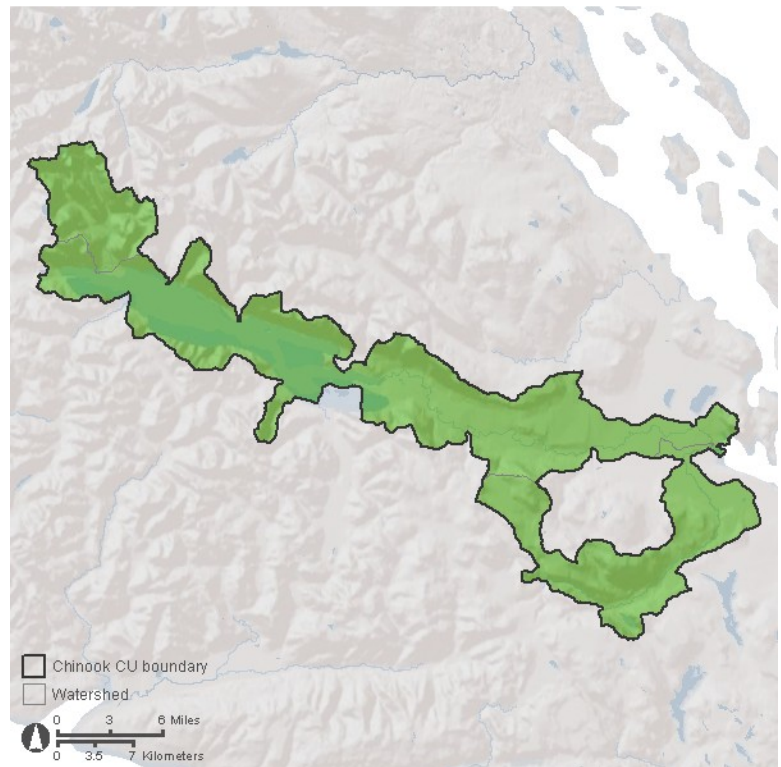
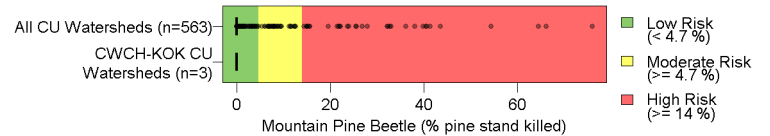
Pressure

Forest Disturbance



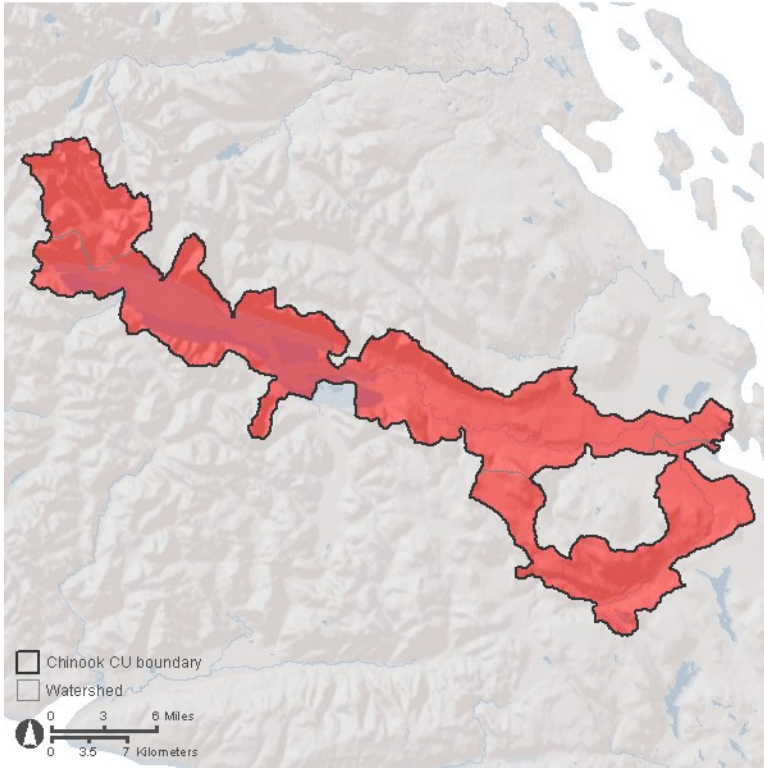
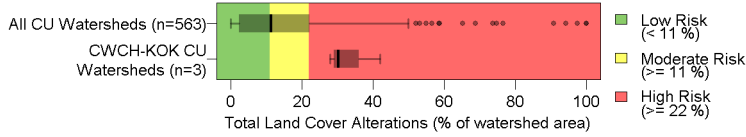
Pressure

Mountain Pine Beetle

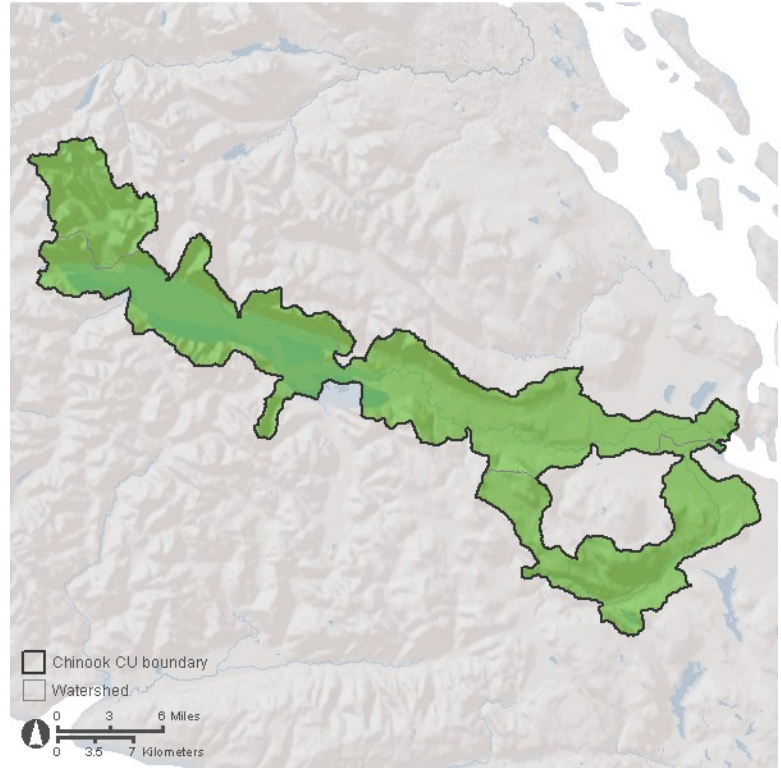
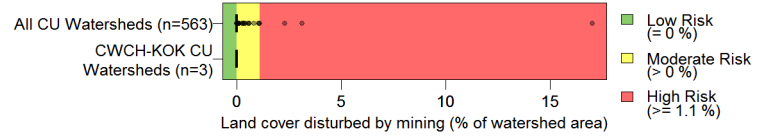




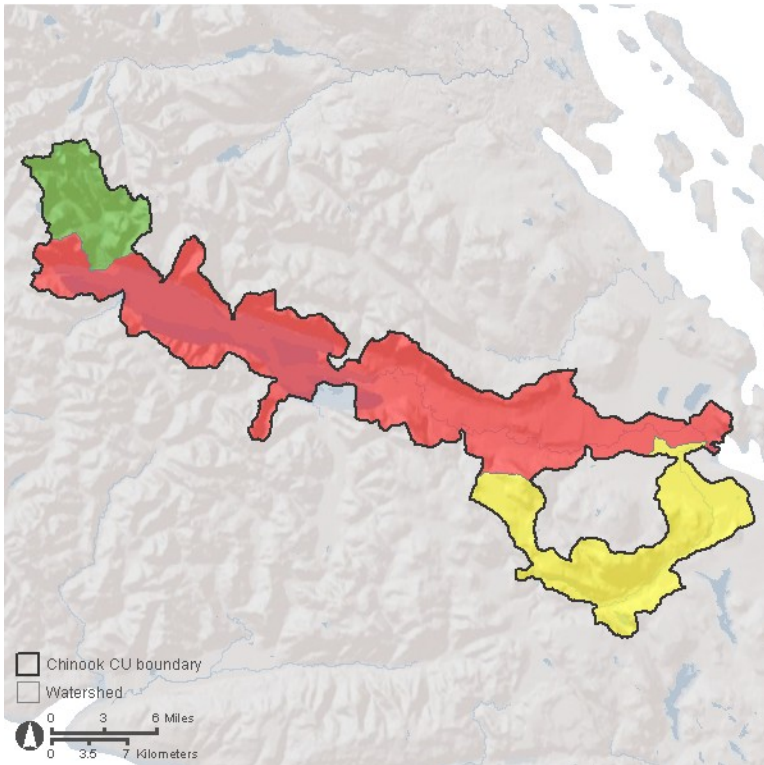
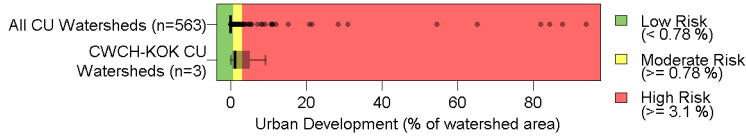
## Pressure: Total Land Cover Alteration



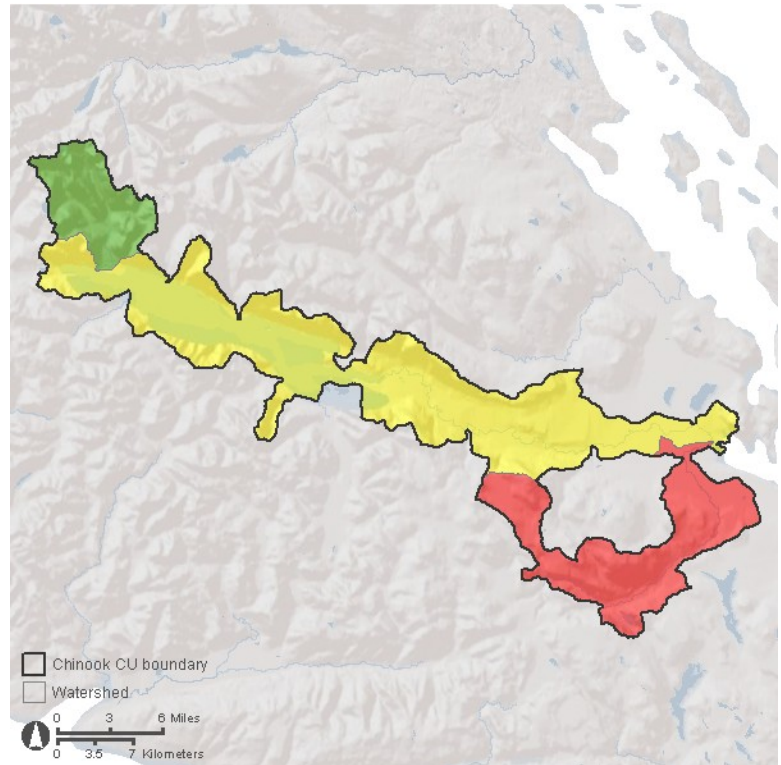
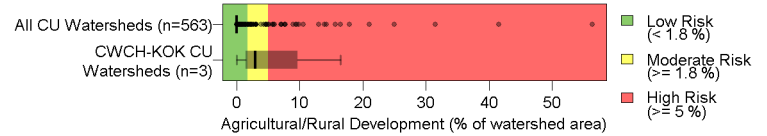
## Pressure: Mining Development



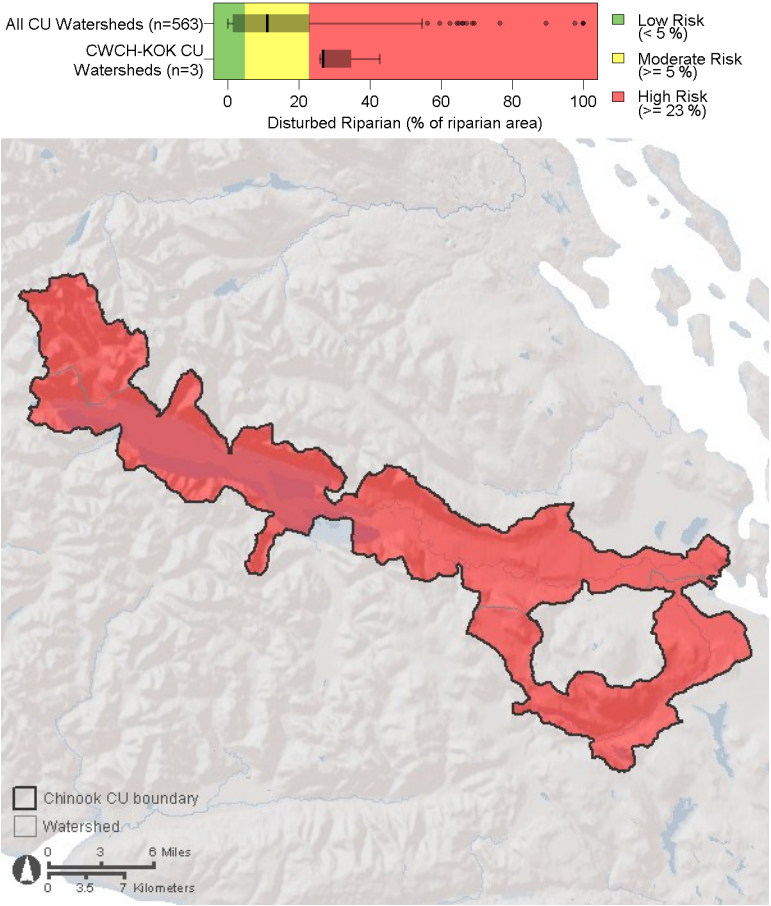
## Pressure: Urban Development



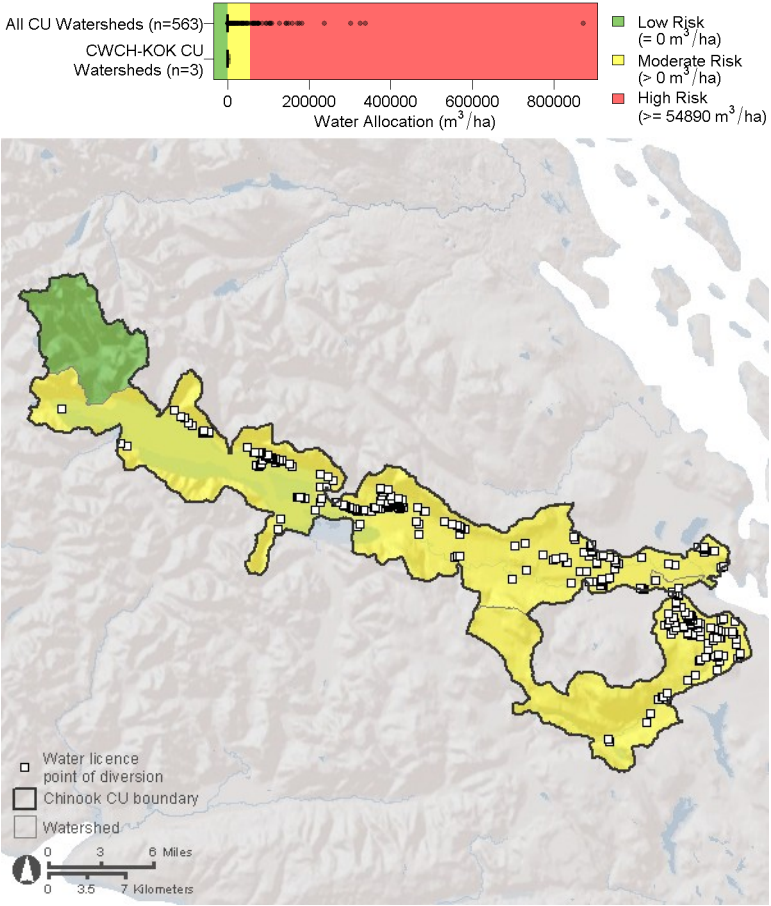
## Pressure: Agricultural / Rural Development



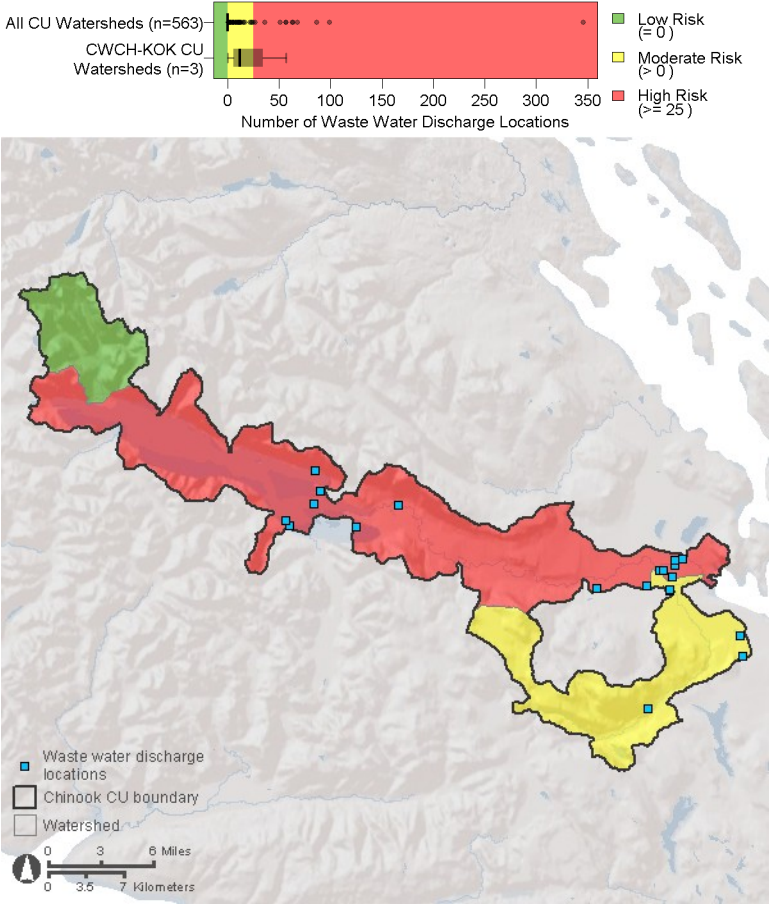
Pressure  
Riparian Disturbance



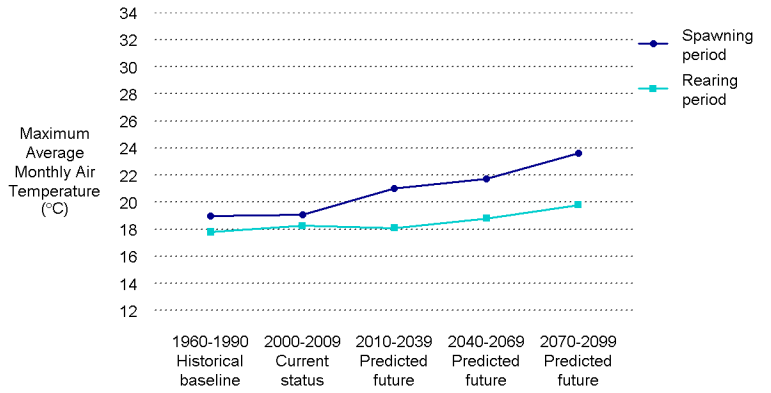
Pressure  
Water Allocation



Pressure  
Permitted Waste Water Discharges



Climate  
Air Temperature (ClimateBC)



% change in air temperature over historical baseline

	Current	2010-2039	2040-2069	2070-2099
Spawning period	0%	11%	14%	24%
Rearing period	3%	2%	6%	11%